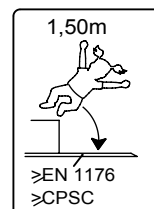
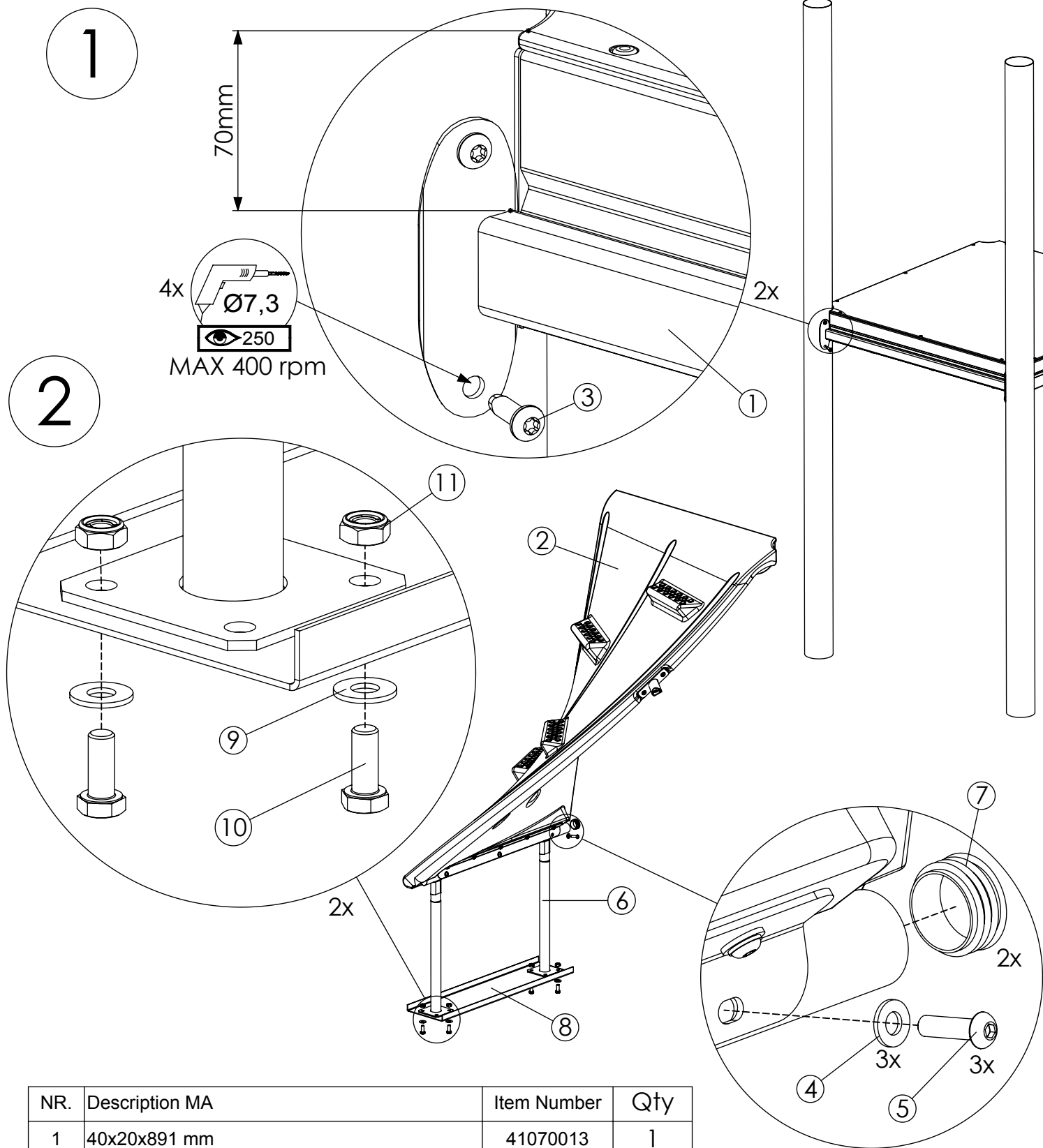


Description MA	Item Number	Qty
40x20x891 mm	41070013	1
1385x873x60 mm	41070010	1
Ø38, 1151x1440 mm	41070012	1
Gripbow Low B	8061001	1
Washer, Bolt cap 9x18x2-ISO4759-3-C	8008849	6
Screw, ISO7380-1-M8x30-10.9	8008445	6
Screw, ISO4762-M8x45-8.8	8008476	1
Ø13x27x2 mm	260485	1
810 x 570 mm	8048406	1
End cap, outer Ø38, inner Ø32-36.	8005232	2
740x180x25	8063009	1
Washer, Bolt cap 11x24x2-ISO4759-3-C	8008850	4
Screw, ISO4017-M10x25-8.8	8008371	4
Nut, Fujilok-M10-8-RingA2	8008796	4
Screw, thr-forming M6x25-8.8-(ISO7380)	8027762	8
Screw, thr-forming M8x25-8.8-(ISO7380)	8008506	4



HAGS ANEBY, SWEDEN
+46(0)380-47300
www.hags.com

**Twisted ramp for steel
post S
450 700 10
1 (3)**



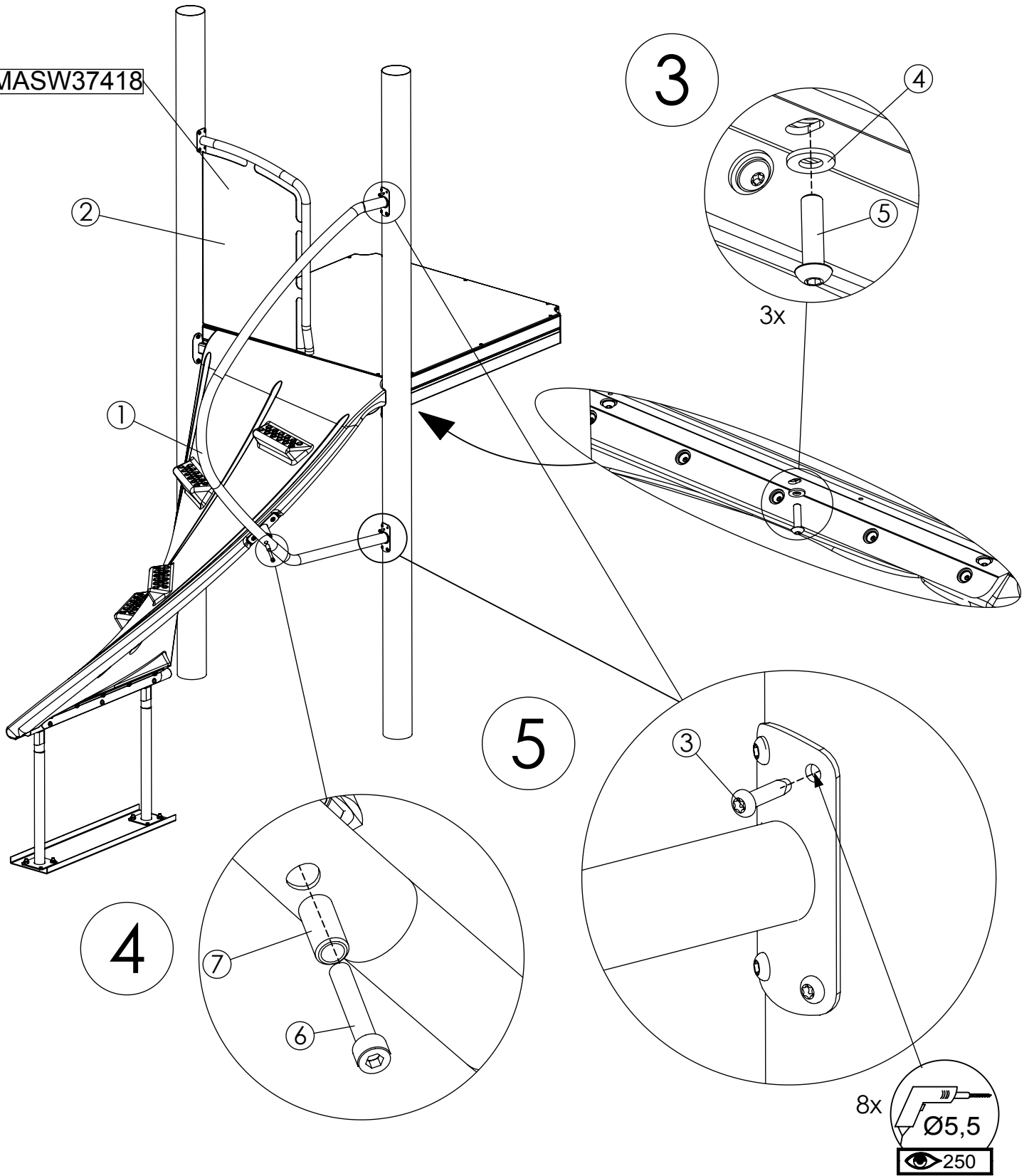
NR.	Description MA	Item Number	Qty
1	40x20x891 mm	41070013	1
2	1385x873x60 mm	41070010	1
3	Screw, thr-forming M8x25-8.8-(ISO7380)	8008506	4
4	Washer, Bolt cap 9x18x2-ISO4759-3-C	8008849	3
5	Screw, ISO7380-1-M8x30-10.9	8008445	3
6	810 x 570 mm	8048406	1
7	End cap, outer Ø38, inner Ø32-36.	8005232	2
8	740x180x25	8063009	1
9	Washer, Bolt cap 11x24x2-ISO4759-3-C	8008850	4
10	Screw, ISO4017-M10x25-8.8	8008371	4
11	Nut, Fujilok-M10-8-RingA2	8008796	4

HAGS ANEBY, SWEDEN
+46(0)380-47300
www.hags.com

Twisted ramp for steel post S
450 700 10
2 (3)

TJ
 ToB
 2017-03-31
 3

□MASW37418



8x

 MAX 500 rpm

NR.	Description MA	Item Number	Qty
1	Ø38, 1151x1440 mm	41070012	1
2	Gripbow Low B	8061001	1
3	Screw, thr-forming M6x25-8.8-(ISO7380)	8027762	8
4	Washer, Bolt cap 9x18x2-ISO4759-3-C	8008849	3
5	Screw, ISO7380-1-M8x30-10.9	8008445	3
6	Screw, ISO4762-M8x45-8.8	8008476	1
7	Ø13x27x2 mm	260485	1

HAGS ANEBY, SWEDEN
 +46(0)380-47300
 www.hags.com

Twisted ramp for steel post S
450 700 10
3 (3)

TJ ToB 2017-03-31 3